

State of Wyoming Corner Record

(In compliance with the *CORNER PERPETUATION AND FILING ACT*, Wyoming Statutes, 1997, Section 33-29-140, et. seq., and the Rules and Regulations of the Board of Registration for Professional Engineers and Professional Land Surveyors)

Reverse side of this form may be used if more space is needed.

Record of original survey and citation of source of historical information (if corner is lost or obliterated). Description of corner monumentation evidence found and/or monument and accessories established to perpetuate the location of this corner. Sketch of relative location of monument, accessories, and reference points with course and distance to adjacent corner(s) (if determined in this survey). Method and rationale for reestablishment of lost or obliterated corner.

G.L.O. Record: U.S. Deputy Surveyor, Edward D. Bright, Sept., 1868; 80.00 Chains...Set boulder 16 x 9 x 8 for cor to Secs 17, 18, 19 & 20.

Found: 10 ins. x 7 ins. x 9 ½ ins. out of the ground, granite type stone, well marked and in a small collar of stone. Stone was marked with four chiseled grooves on the west face and one chiseled groove on the east edge (not typical of the G.L.O. system of markings). Stone was 5.8 feet east of a braced steel fence post of a 5 wire, east/west steel post fenceline. An existing steel fence post witness bears 0.7 foot south.

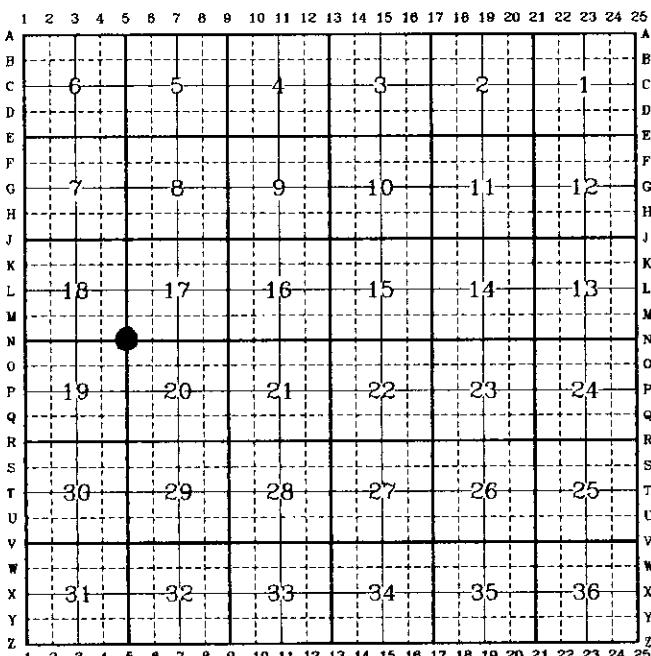
Set: Nothing

See back of this sheet for measurements to other found or set monuments in the area.

Date of Field Work: December 18, 1998

Office Reference: A.V.I. Job No.:2-2085C

CROSS INDEX DIAGRAM



Corner Name: NW

Section: 20

T.12N., R.67W.; 6th P.M. Cross-Index No.: N-5

SBRPEPLS/PLSW:March 1994

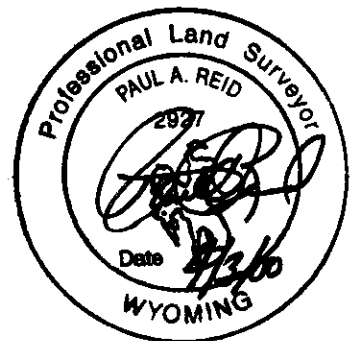
Firm/Agency, Address

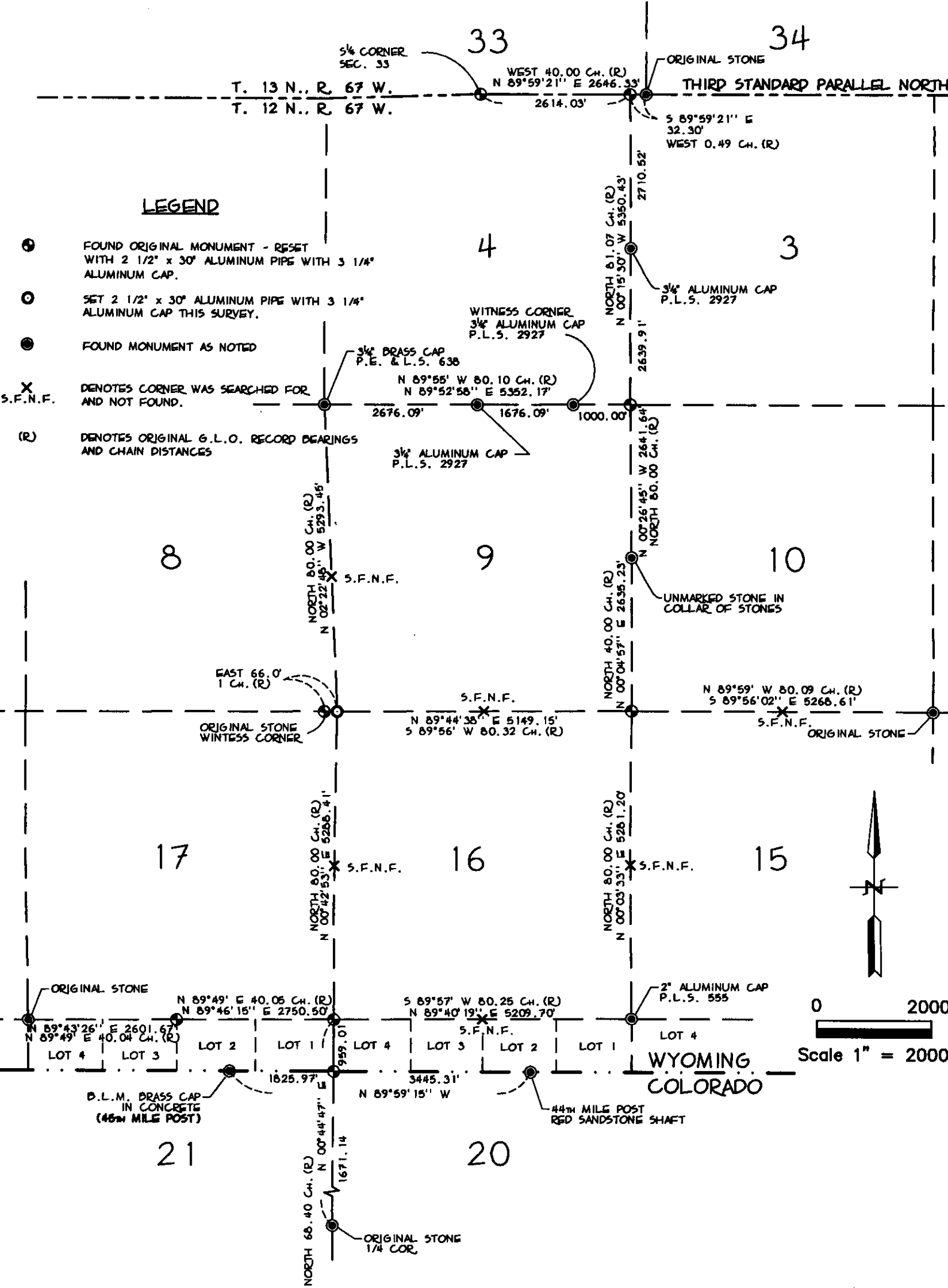
Paul A. Reid, P.L.S.
A.V.I., p.c.
2035 Westland Road
Cheyenne, WY 82001

Telephone Number:
(307) 637-6017

This corner record was prepared by me or under my direction and supervision.

SEAL & SIGNATURE





- LEGEND**
- ⊕ FOUND ORIGINAL MONUMENT - RESET WITH 2 1/2" x 30" ALUMINUM PIPE WITH 3 1/4" ALUMINUM CAP.
 - SET 2 1/2" x 30" ALUMINUM PIPE WITH 3 1/4" ALUMINUM CAP THIS SURVEY.
 - FOUND MONUMENT AS NOTED
 - X DENOTES CORNER WAS SEARCHED FOR AND NOT FOUND.
 - (R) DENOTES ORIGINAL G.L.O. RECORD BEARINGS AND CHAIN DISTANCES

SKETCH OF SURVEY
 T. 12 N., R. 67 W., 6TH P.M.
 LARAMIE COUNTY, WYOMING